

Digital Photos - Beginning to End – Part 4

Digital Photos – Beginning to End

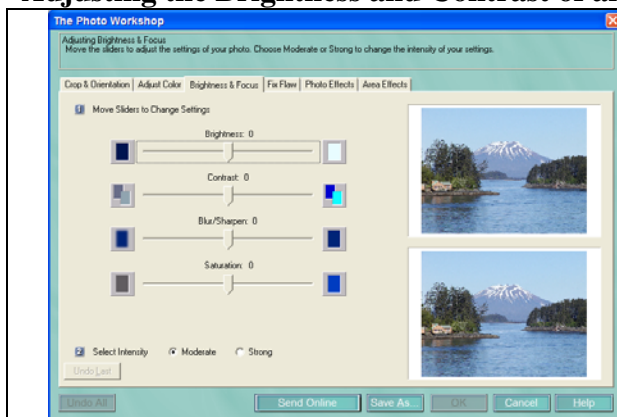
Part 4

Topics

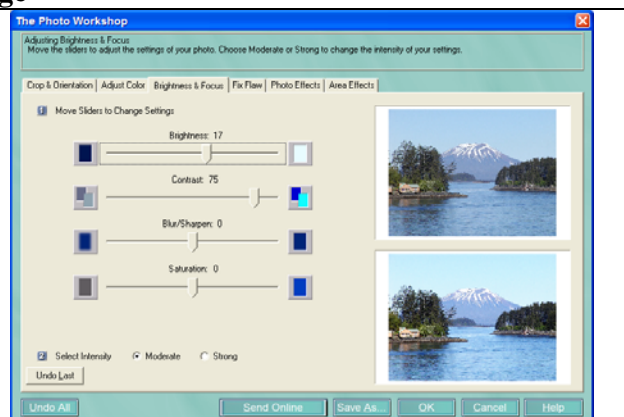
Editing a digital photo

- Brightness and focus (brightness, contrast, blur, sharpen, Saturation)
- Fix flaw (red eye, pet eye, scratch, shiny face)
- Photo effects (artistic, black and white, colorization, filter)
- Text (creating, resizing, rotating)
- Frame (add, remove)

Adjusting the Brightness and Contrast of an Image



Click the “Brightness and Focus” tab. The top photo is the current photo; the bottom photo is the changed photo.

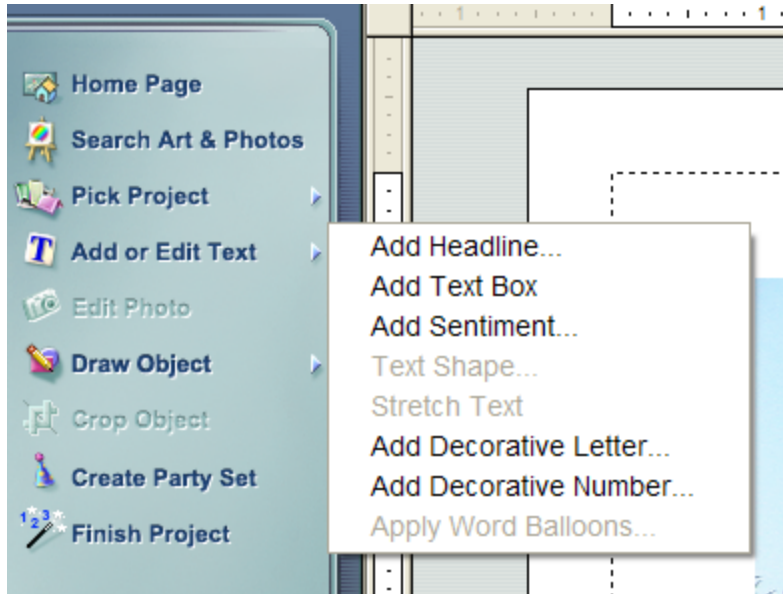


Move the brightness and contrast sliders, and watch the bottom photo change.

Try “moderate” and “strong” intensity to see the effect.

Click “save as” if you want to save the revised photo as a photo, not as a project. You can then click “OK” to put the revised photo onto the project.

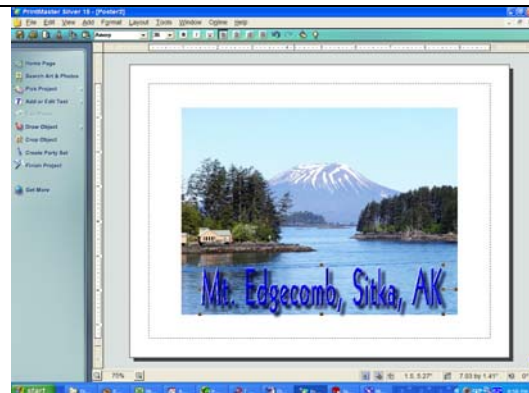
Digital Photos - Beginning to End – Part 4



Click on “Add or edit text”. You will then probably want to select “Add headline” or “Add text box”. Try both to see the difference.



This is “Headline” text.

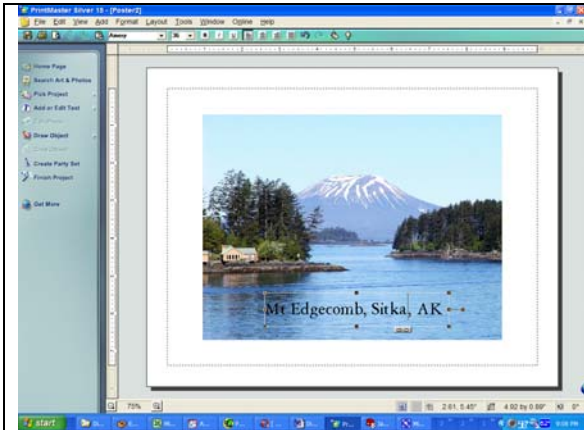


The text box can be resized and dragged to a new location.

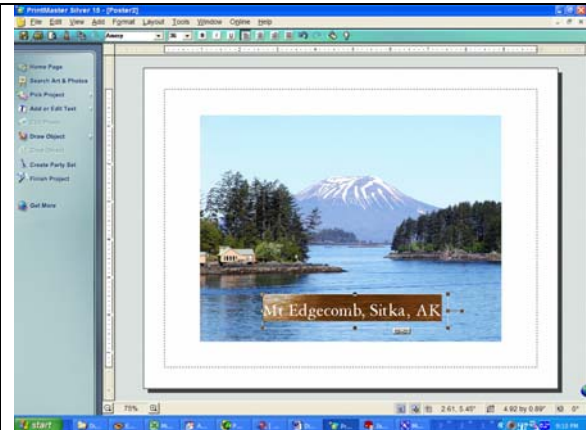


Try various headline styles

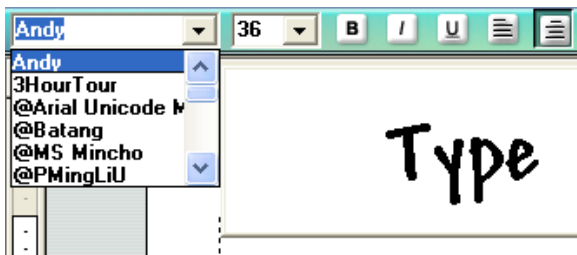
Digital Photos - Beginning to End – Part 4



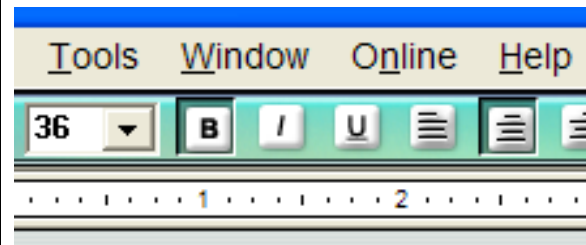
Result of clicking “Add text box”,
double-clicking in the text box to
see the cursor, then adding text.



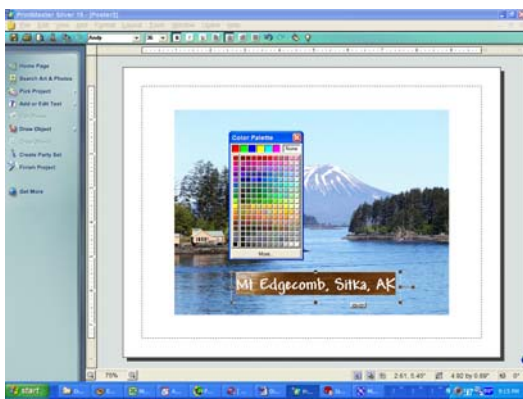
Double-click in the text box, to select all the
text.



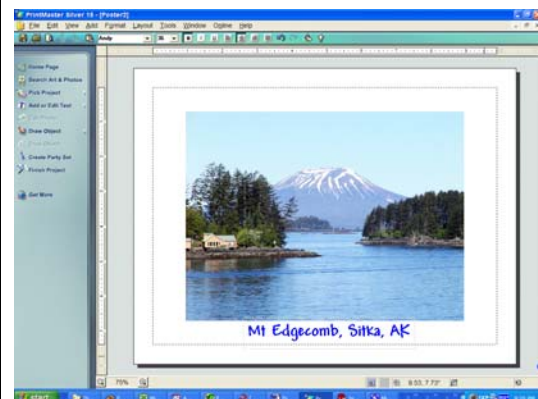
Click on the down arrow to the right of the font
box, and select a font; also select a font size.



Click “B” for bold, “I” for italics,
and “U” for underline.



Click the paint bucket, next to the lightbulb,
to change the color of the text.

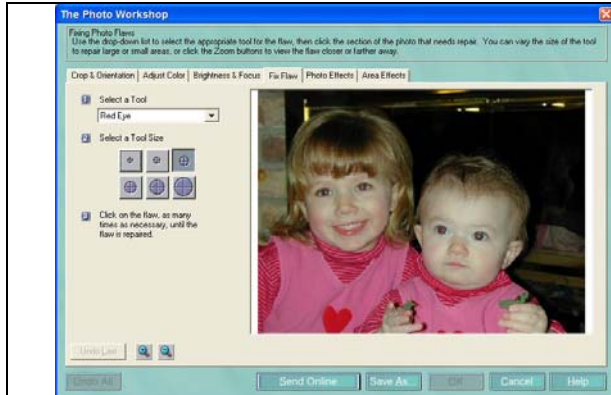


Note that the text box does not have to be
within the borders of the photo.

Digital Photos - Beginning to End – Part 4

Fix flaw (red eye, pet eye, scratch, shiny face)

Add photo; click on photo; edit photo; fix flaw; select “red eye” from the drop-down menu.



Add photo; click on photo; edit photo; fix flaw; select “red eye” from the drop-down menu.



Click the “+” magnifying glass until the photo no longer enlarges.



Click on the correct size tool for the size of the pupil. Move the circle over the pupil. Select another size if necessary. When you have the correct size, position the circle over the pupil and click one or more times, to accomplish the desired change.

Click “undo last”, “undo all” or “cancel” if you don’t like the change.

Move the sliders in the horizontal and vertical scroll bars to get the other eyes into view, and change those eyes.

If you made changes and like them, click “OK”.

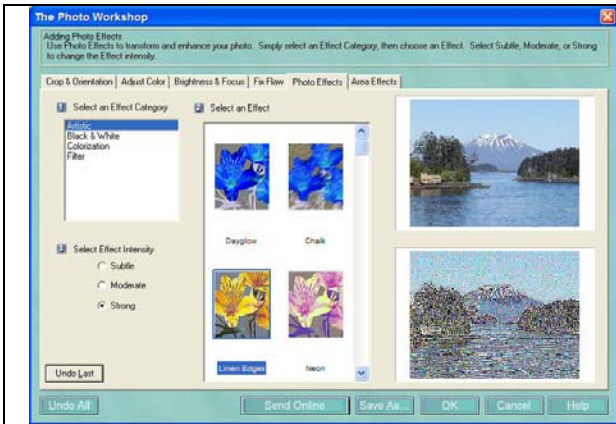


Select “shiny face” from the drop-down menu, and select the smallest tool. Click several times on the tip of the boy’s nose and below his nose.

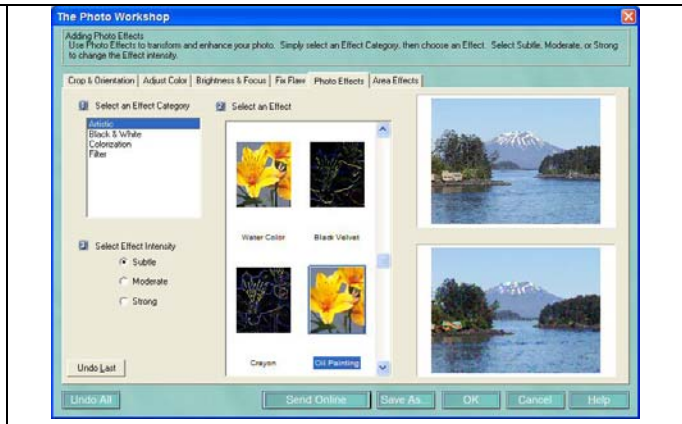
Try reducing or eliminating the reflection on the girl’s lower lip, and from two teeth.

Digital Photos - Beginning to End – Part 4

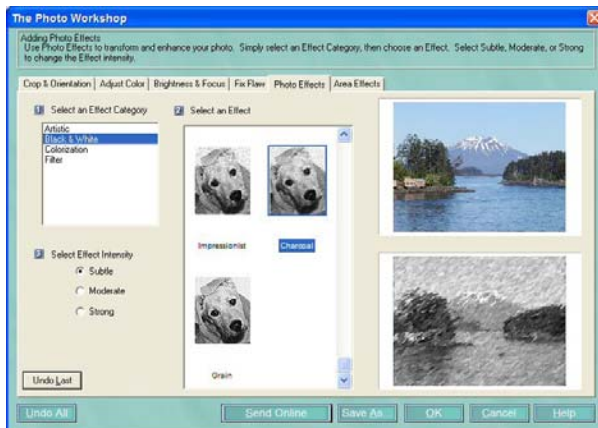
Photo effects (artistic, black and white, colorization, filter)



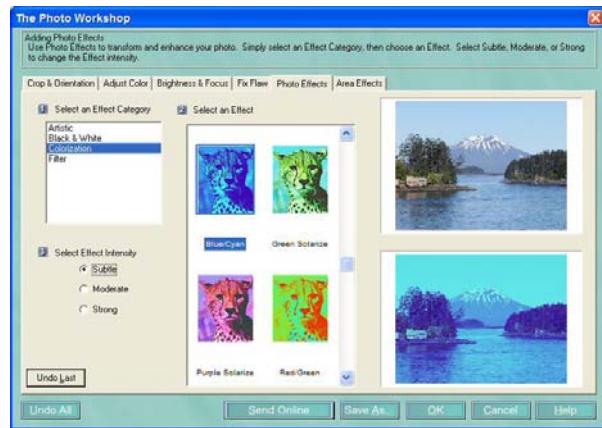
Try various artistic effects by clicking on the name or the colored area above the name.



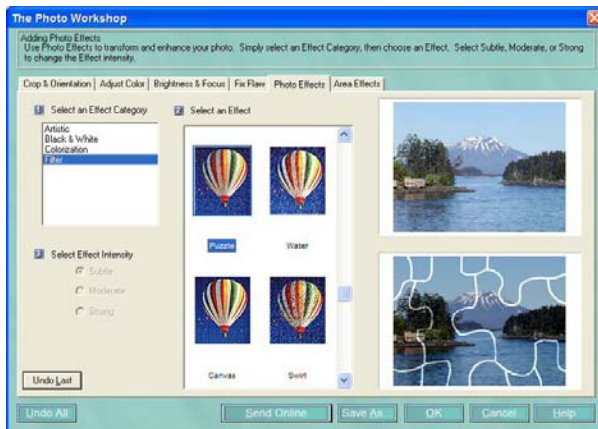
Try various intensities, without using “undo last”. Click “OK” for the change you want to keep



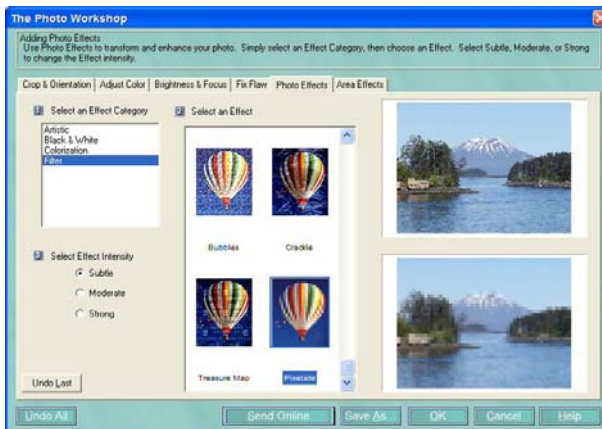
Try several black and whites with different intensities.



Try several colorization with different intensities.



Try various filters, such as making a puzzle.



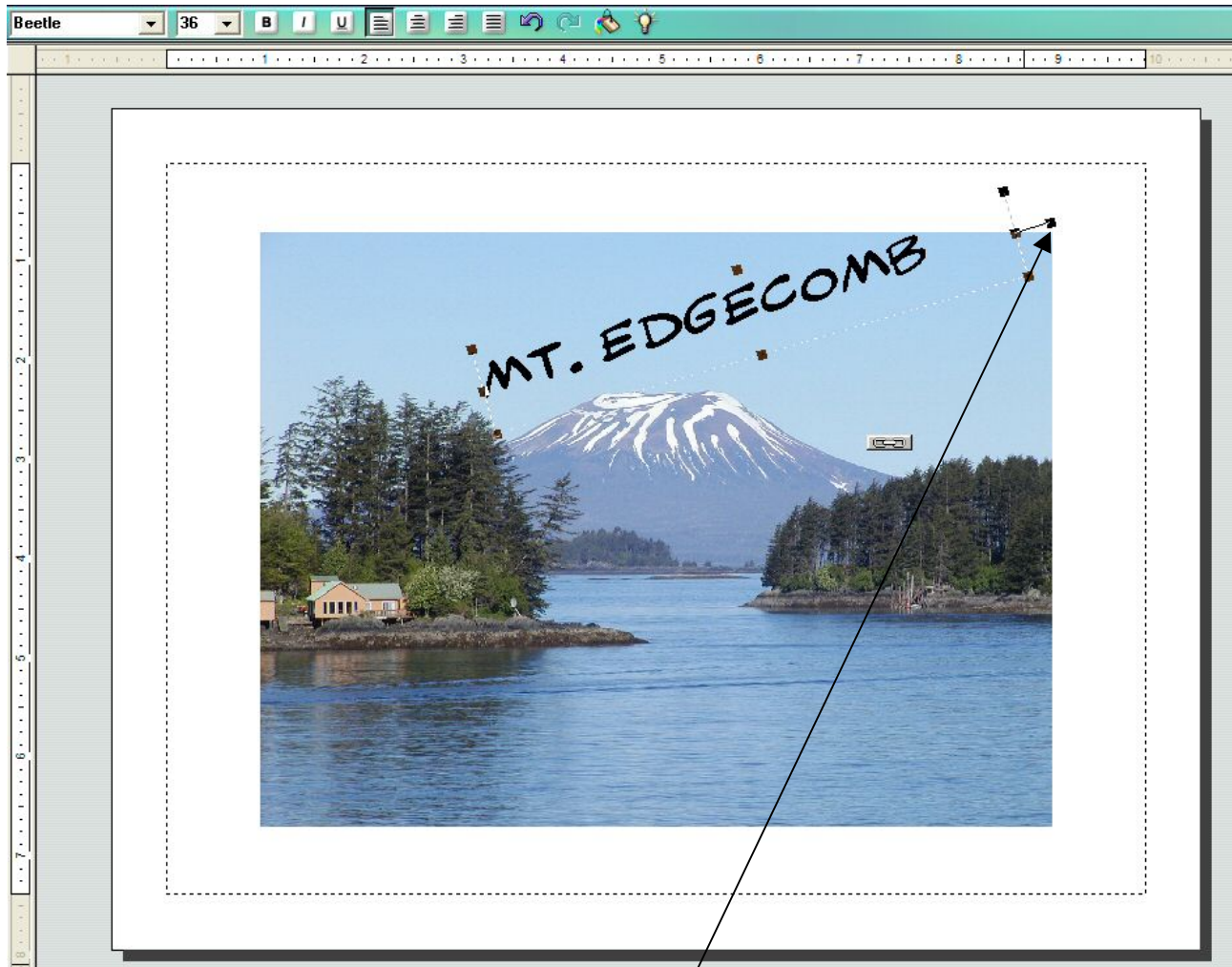
You may have seen pixilated pictures used by news services when trying to

Digital Photos - Beginning to End – Part 4

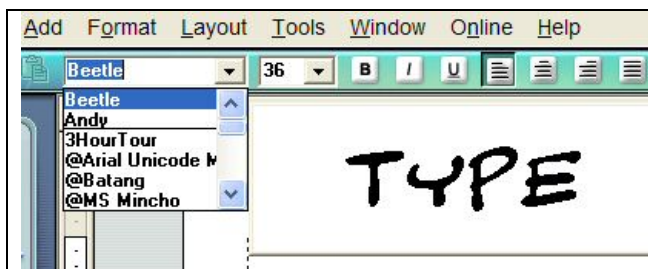
hide the identity of a person.

Text (creating, resizing, rotating)

See page two for information on creating and resizing text.



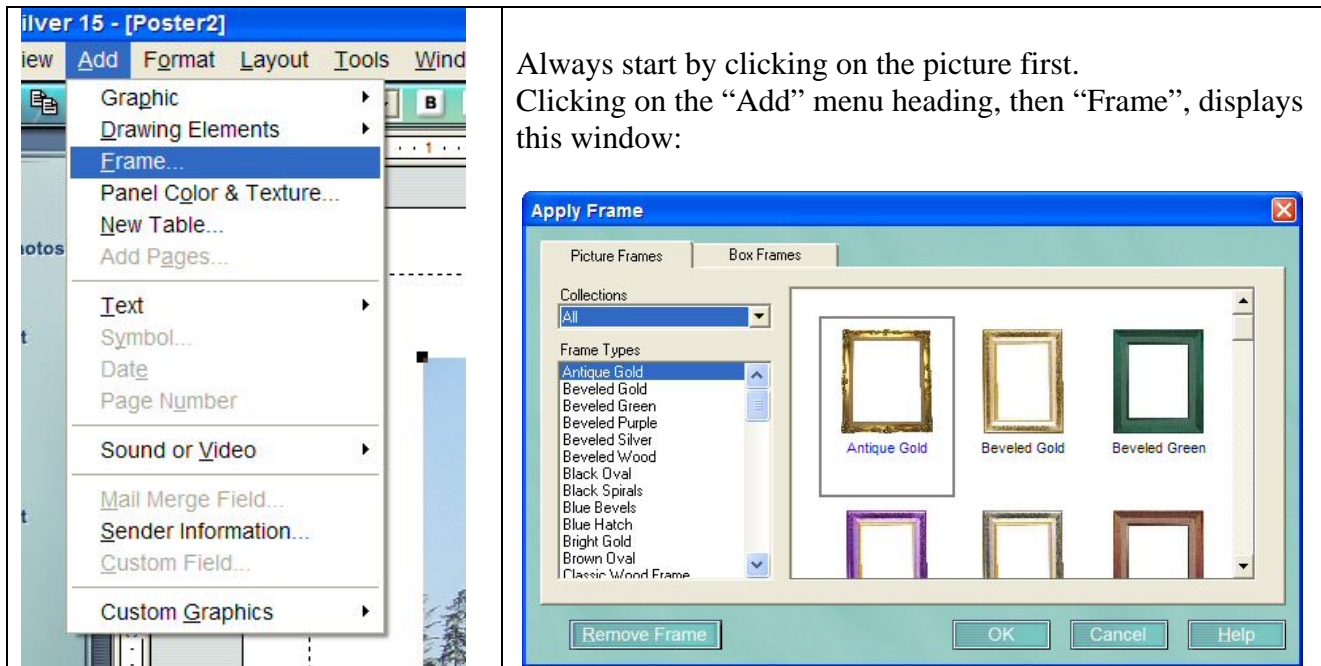
Moving the mouse arrow near the handle outside the box will cause the arrow to become part of a circle. Move the mouse (while holding down the left mouse button) and the text will rotate.



Clicking the arrow next to the font name will show a drop-down menu of font names. Passing the mouse arrow over a name will show a sample of that name. Clicking a font name will cause all selected text to have that font.

Digital Photos - Beginning to End – Part 4

Frame (add, remove)



Always start by clicking on the picture first.
Clicking on the “Add” menu heading, then “Frame”, displays this window:

Be sure to have the picture as large, or larger, than the dotted line box. The frame will start at the dotted line. If you don't like the frame, and want to change it or delete it, click on the “Add” menu heading, then “Frame”, to display the frame window again. Click on the “remove frame” button in the lower left corner.

Part 5

Save as

Export

Changing the File Properties

Changing the Resolution of an Image

Resizing an image

Printing a photo

Resolution

Printers

Ink

Paper

Sending an Image by E-mail

Resolution

Physical size

File size; compression